



Oil burners

**MACK**





## Oil burners

# MACK



The Sime **Mack** range of oil burners have been developed specifically for matching with the following appliances:

Boiler	Burner model
Estelle/Rondò 3	<i>Mack 3</i>
Estelle/Rondò 4 -Rondò B 4	<i>Mack 4 - Mack 4 SP</i>
Estelle/Rondò 5 -Rondò B 5	<i>Mack 5 - Mack 5 SP</i>
Estelle/Rondò 6-7	<i>Mack 6</i>
1R 6 ÷ 1R 8	<i>Mack 6</i>
1R 9 / 2R 6 ÷ 2R 9	<i>Mack 7</i>

The **Mack** burner range is manufactured to comply with the Directive E.M.C. 86/336 EEC, Directive L.V. 73/23 EEC, Directive Machines 98/37 EEC and Directive Efficiency 92/42 EEC.

The **Mack models 3, 4 & 5** are equipped with a factory fitted pre-heater, adjusting resistance, which improves the combustion.

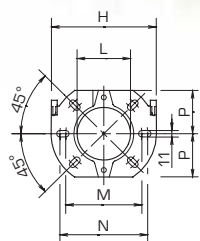
### Easy installation and maintenance

Assembling the **Mack** is extremely simple as all the necessary accessories are included as standard. The main advantages of the **Mack** burner is reliability and quietness.

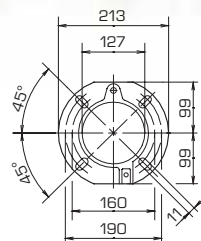
The burner casing attenuates noise levels as well as protecting all the components. Access to the internal components is from the front of the burner.

### Dimensions

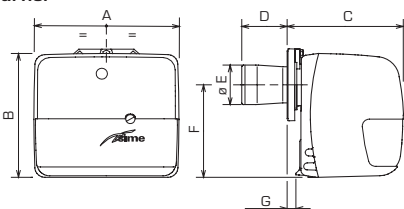
Mack 3-4-4SP-5-5SP-6 flange



Mack 7 flange



Burner



Type	A	B	C	D	øE	F	G	H	L	M	N	P
Mack 3	268	229	208	86	89	170	10	180	91	130	150	72
Mack 4 - 4SP	285	249	230	86	89	186	16	180	91	130	150	72
Mack 5 - 5SP	285	249	230	86	89	186	16	180	91	130	150	72
Mack 6	326	275	270	110	105	208	32	189	106	140	170	83
Mack 7	370	317	304	118	125	237	40	-	-	-	-	-

### Technical features

		MACK 3	MACK 4-4SP	MACK 5-5SP	MACK 6	MACK 7
<b>Output minimum/maximum</b>	kg/h	1,4/2,2	2/3,2	2,8/3,9	3,5/10	8/18
<b>Thermal power min./max.</b>	kW	16,6/26	23,8/37,9	33,3/46,2	42/120	95/213,5
<b>Motor</b>						
Run current	A	0,7	0,7	0,7	0,8	1,4
rpm		2850	2850	2850	2850	2750
rad/s		298	298	298	298	288
<b>Capacitor</b>	µF	4	4	4	4	6,3
<b>Pump pressure</b>	bar	7÷15	7÷15	7÷15	7÷15	7÷15
<b>Electrical protection grade</b>	IP	40	40	40	40	40
<b>Absorbed electrical power</b>	W	165	185 - 130*	185 - 130*	170	300
<b>Fuel</b>						
Gas oil - max. viscosity at 20°C: 6 mm <sup>2</sup> /s						
<b>Electrical supply</b>						
230V ±10% ~50Hz single phase						
<b>Ignition transformer</b>						
secondary 8 kV - 16 mA						

\* Models SP

We pursue a policy of continuing improvement in design and performance of our products. The right is therefore reserved to vary specifications without notice.

